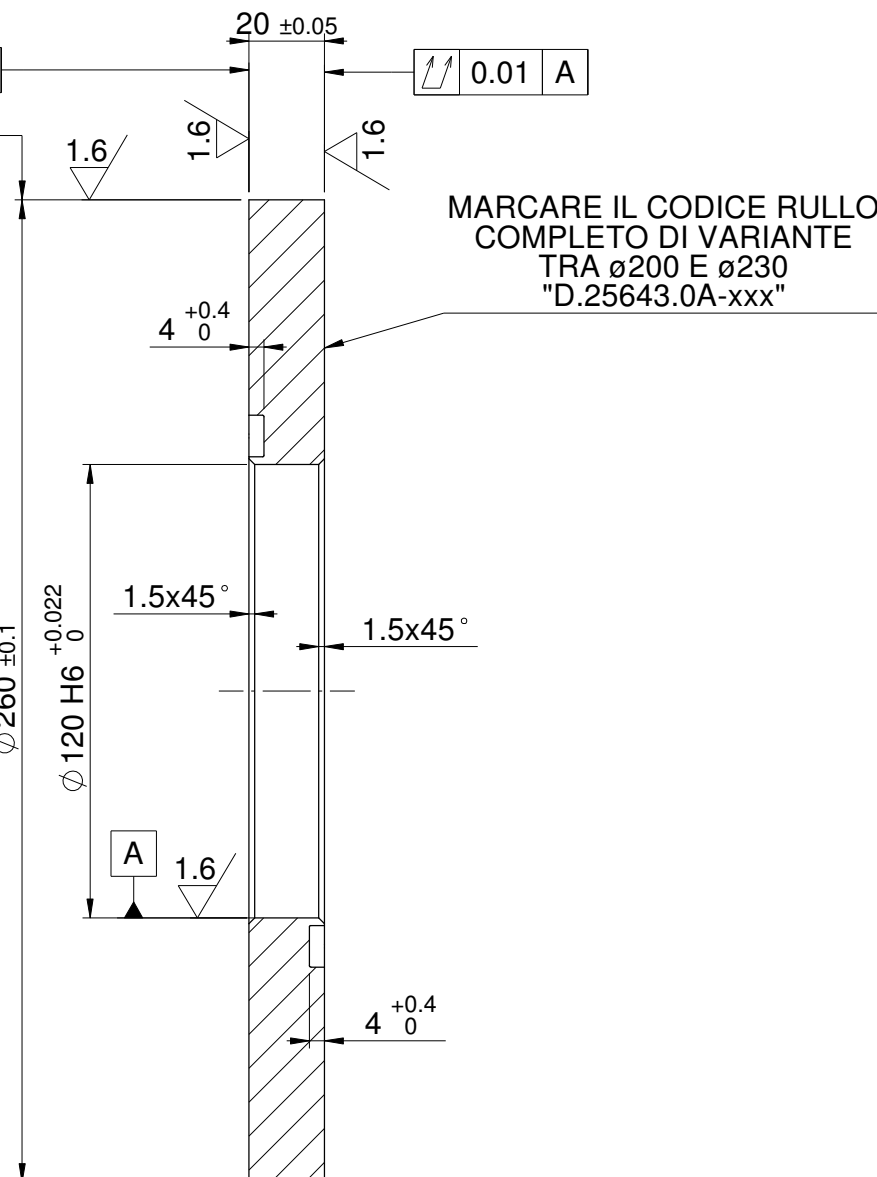
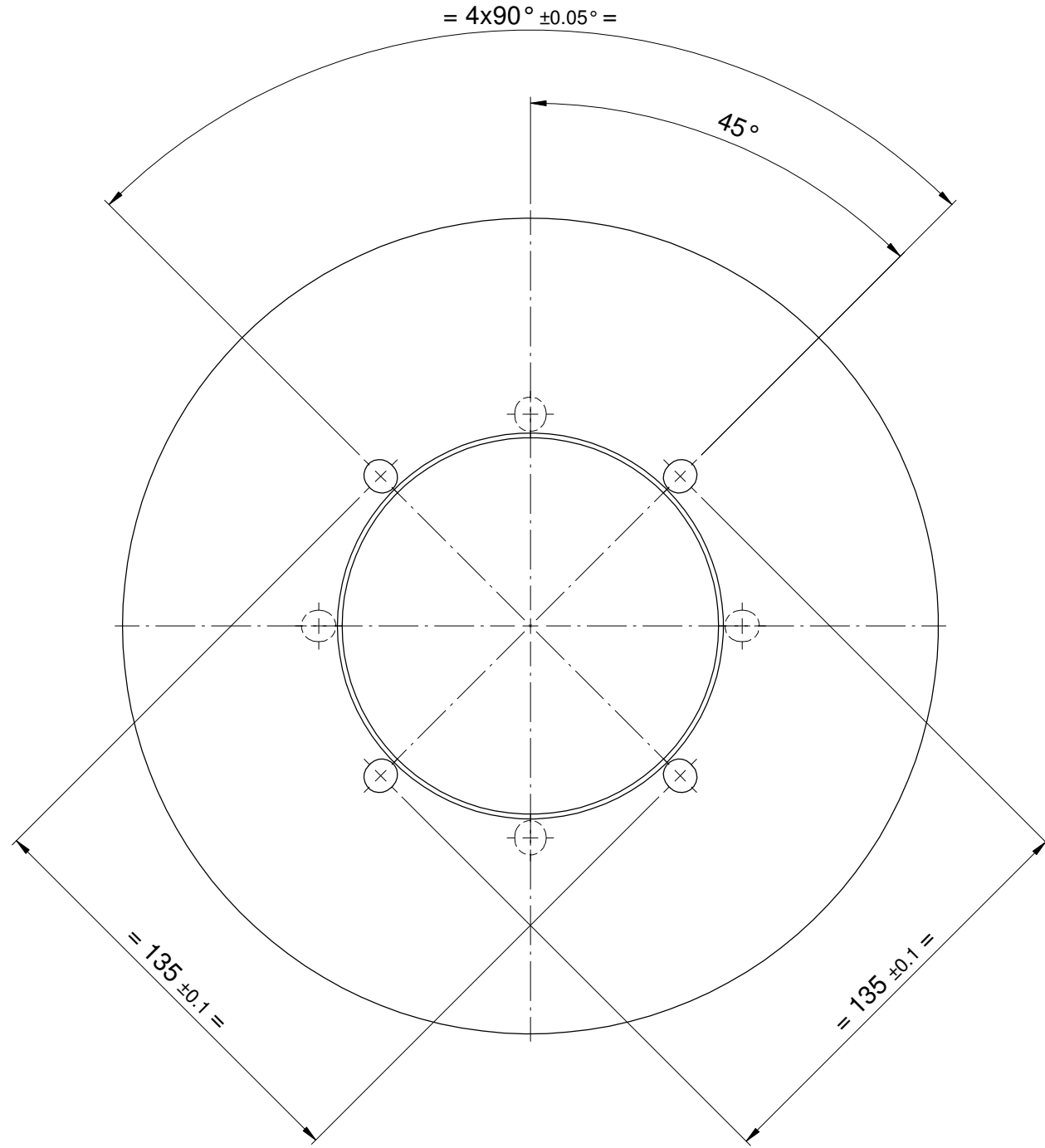
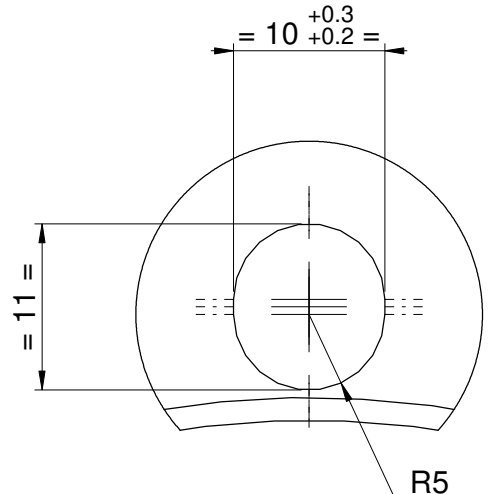


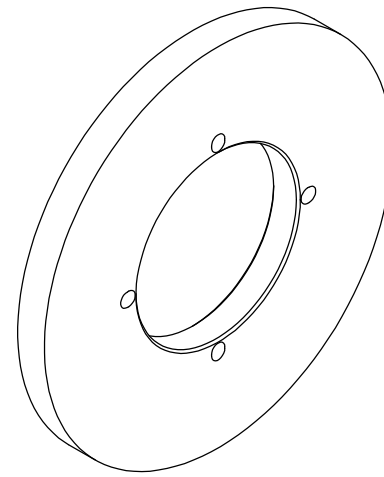
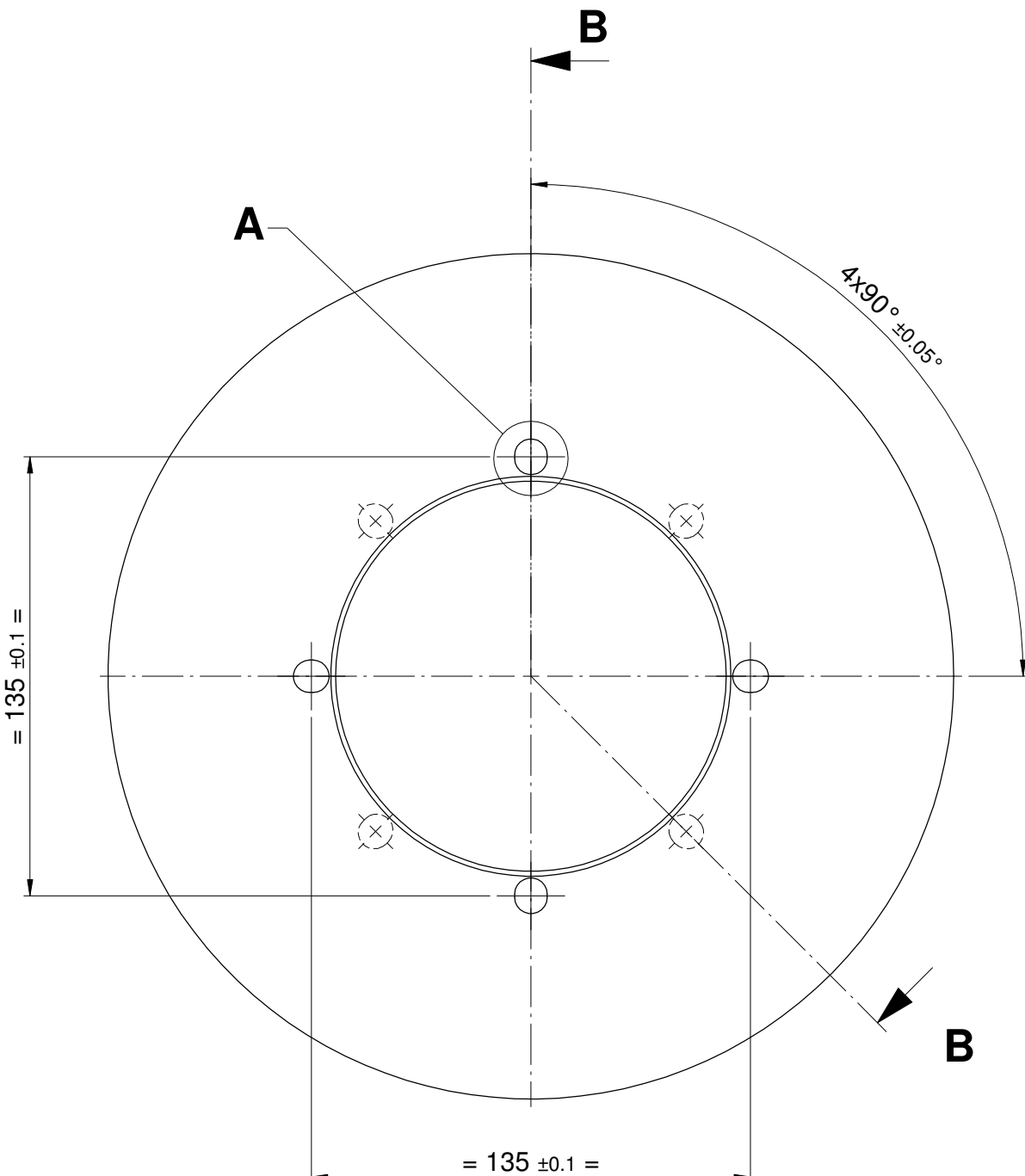
5:10:4: Rettifica9:3: Tratt. termico8:2: Tornitura7:1: Acquisto6:



SECTION B-B



DETAIL A  
TYPICAL (4+4 SLOTS)  
2 : 1



D.25643.0A -		XX	X

	MATERIAL	HEAT TREATMENT	RAW MATERIAL
K	AISI D2 (UNI X155CrVMo121KU) - K110	Stress Relieving + Hardening + Tempering HRC 56÷58	Tondo lam. D.262 L=23 0+1
G	CARBURO G3	-	

ROLL PROFILE	
00	FLAT

CONFIGURATIONS	WEIGHT [kg]
D.25643.0A-00K	6.50
D.25643.0A-00G	11.70

6/1.6/

ATTENZIONE  
LASCIARE SOVRAMETALLO PER RETTIFICA  
SULLE SUPERFICI CON RUGOSITA' 1.6 o 0.8

According to the law this document is considered to be a company secret and its content must not be disclosed to third parties in whole or in part to others parties or to competitors without any specific written authorisation from DEM Costuzioni Speciali.

Date	Revisions description	Des. : Della Vedova	Drawn:DellaVedova	Approved
Material V.TAB	Raw material V.TAB.			
Heat Treatment V. TAB.	Surface treatment			
Job Reference	Q.ty of pieces	Drw obtained from		
		D.20702.0A		
<b>DEM</b> ROLLING TECHNOLOGY		Description IDLE ROLL RULLO FOLLE		
Drawing	Rev	Weight [Kg] V.TAB. FINITO	Scale 1:2	Sheet 1 of 1
<b>D.25643.0A</b>				