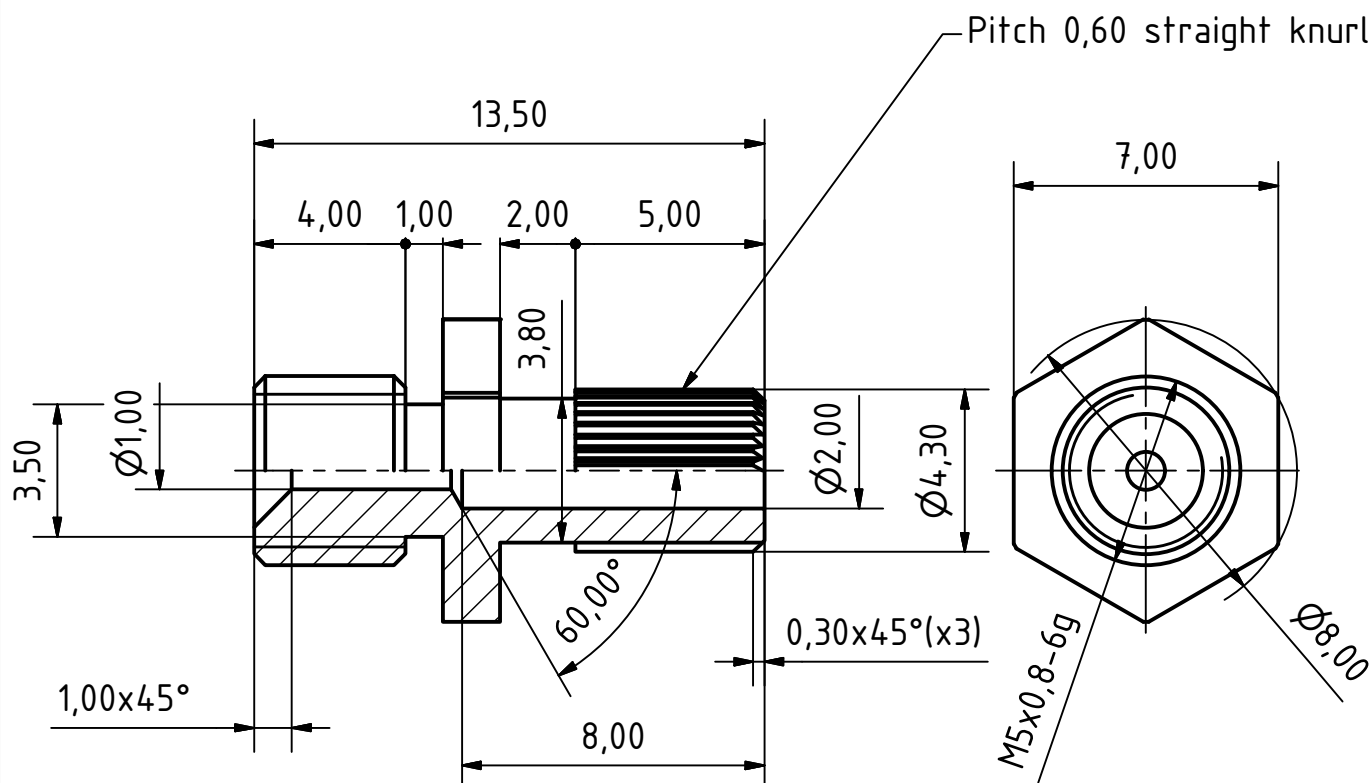



1,6 (✓)



1. All dimensions in mm.
2. Tolerance not indicated $\pm 0,1\text{mm}$.
3. Remove sharp edges;
4. Coverage (Ni3...6).

Itemref	Quantity	Material SPEC CW611N (CuZn39Pb1)			Article No./Reference	
Designed by Ilyushin	Checked by	Approved by	-	date	File name SL.3331.01.014-01 Sleeve.idw	Date 09.09.2016
FIRST ANGLE 		Superlum Diodes Ltd.			Sleeve	
		SL.3331.01.014-01 Sleeve			Edition	Sheet 1 / 1